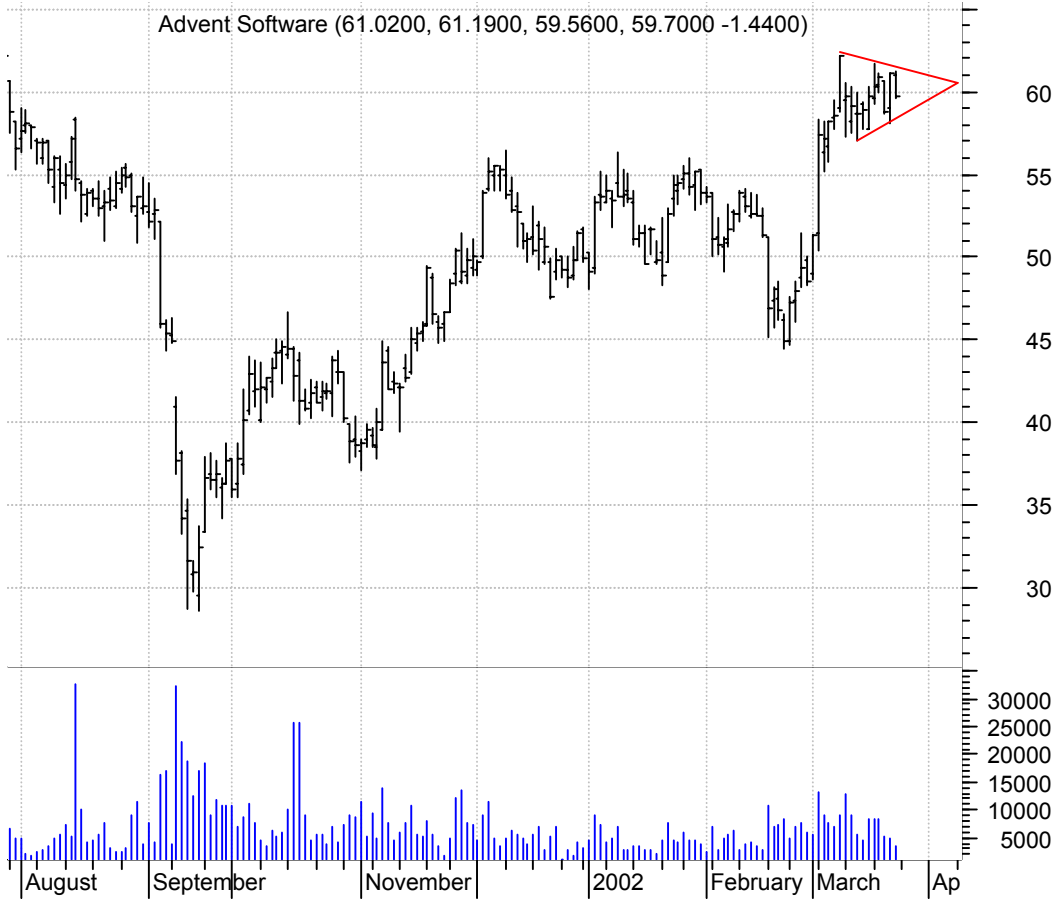


ADVS

Advent Software (61.0200, 61.1900, 59.5600, 59.7000 -1.4400)



AHR

Anthracite Capit (11.7300, 11.7300, 11.4700, 11.6700 +0.0400)



AIN



ALLY



AMG

Affiliated Manag (72.8000, 72.8000, 72.1900, 72.3900 -0.5800)



ATH

ANTHEM INC:NYSE (57.4000, 58.0500, 56.6500, 56.8000 -0.5000)



ATMI



BLC



BLTI



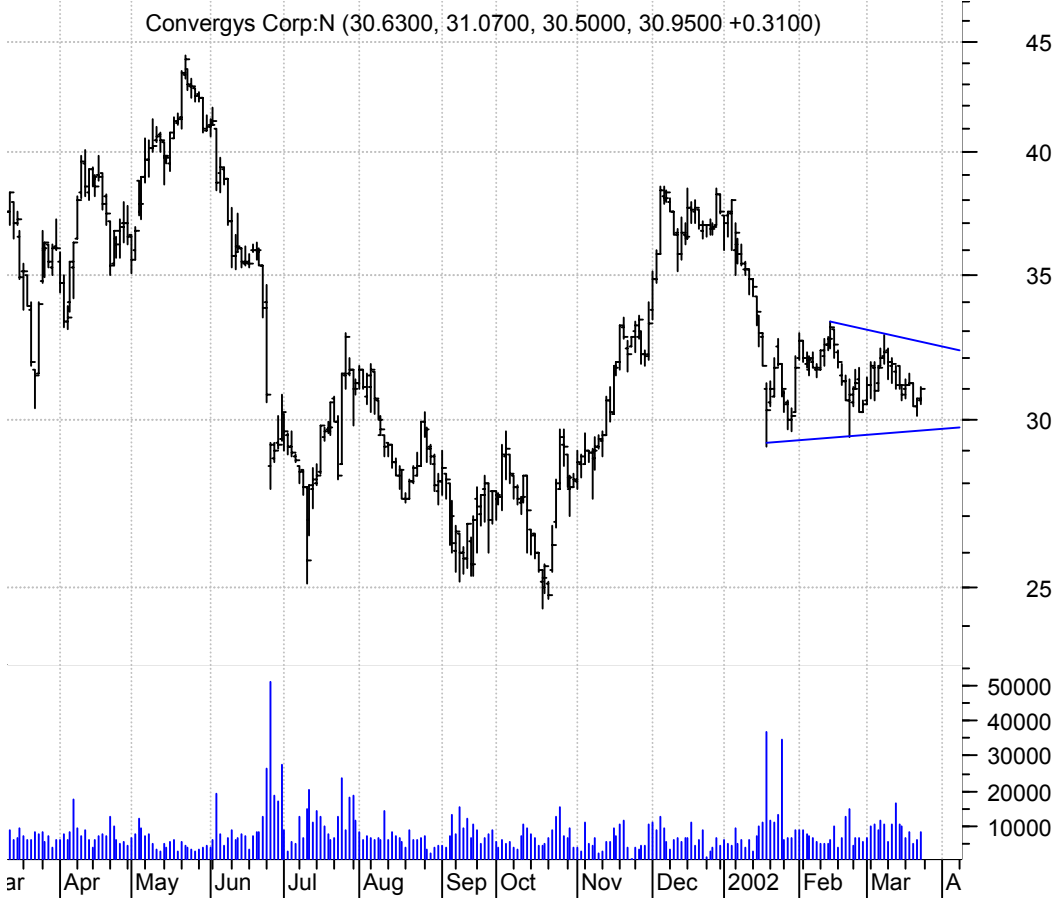
CBT



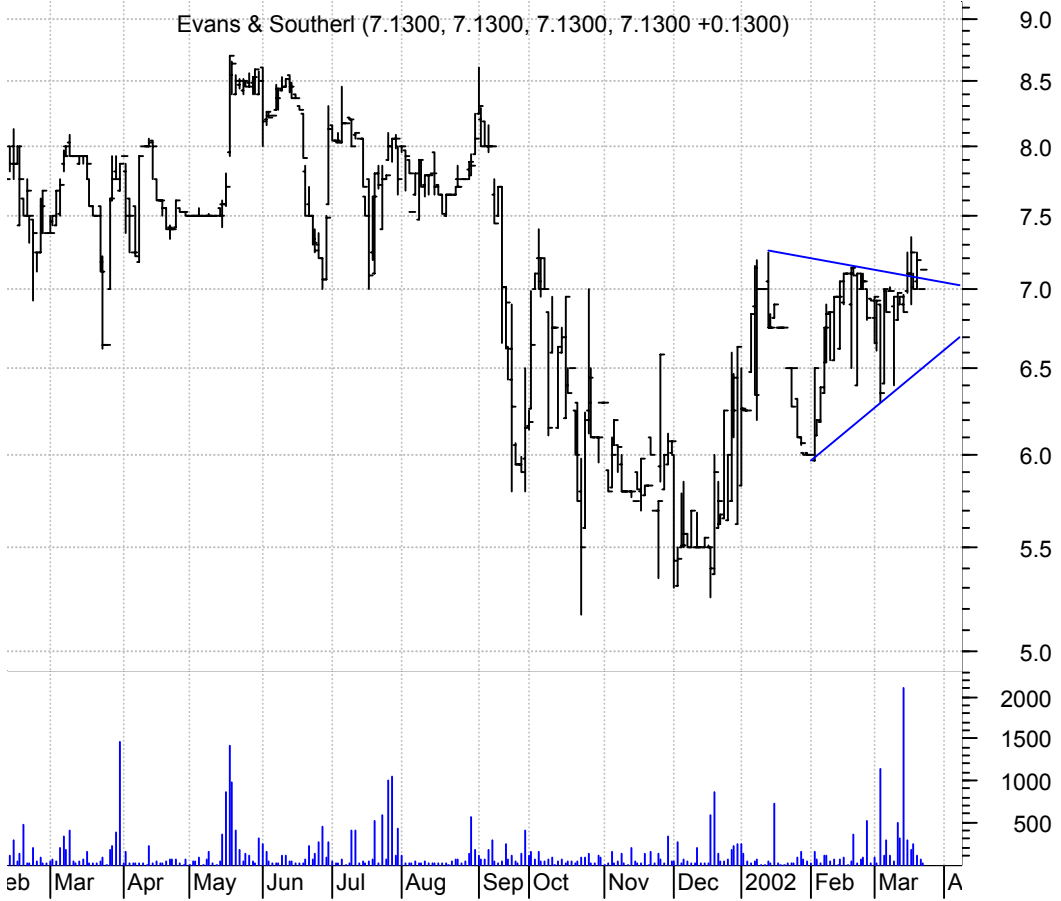
CCR



CVG



ESCC



FII



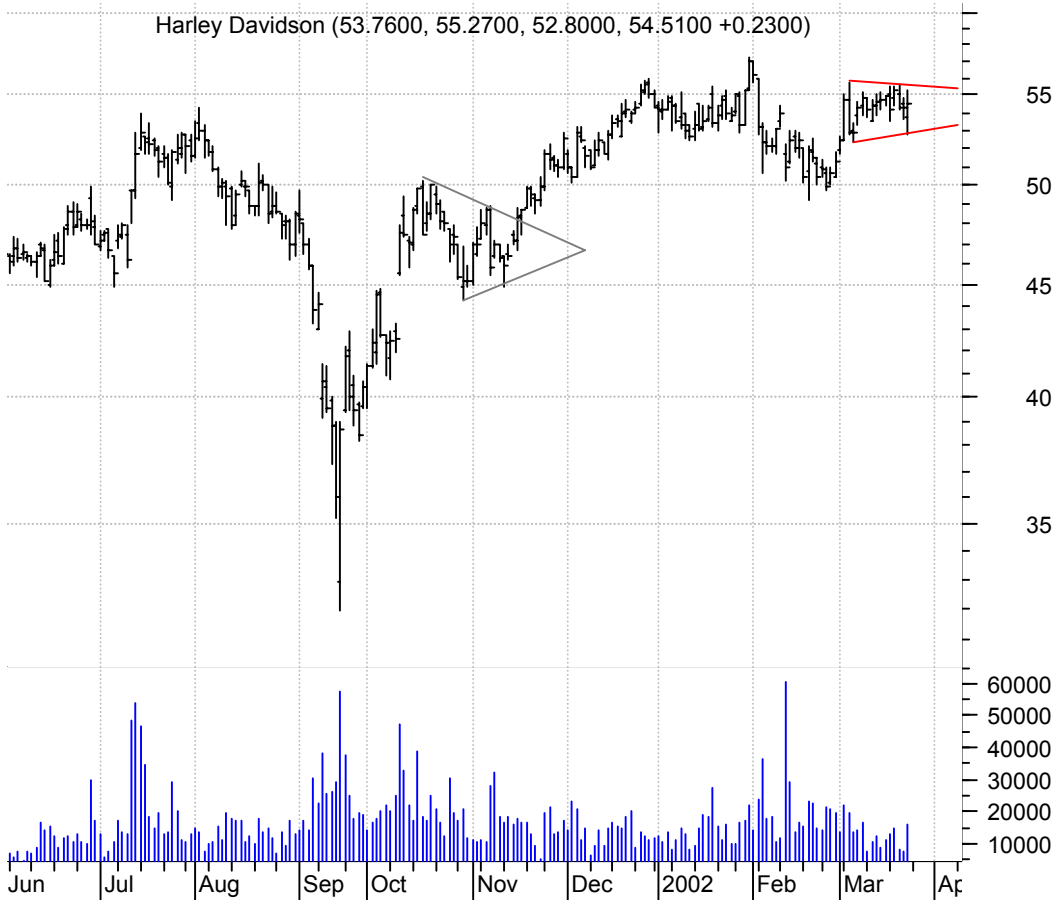
HAR

Harman Int'l Ind (50.2500, 50.5400, 50.0000, 50.0000 -0.4000)



HDI

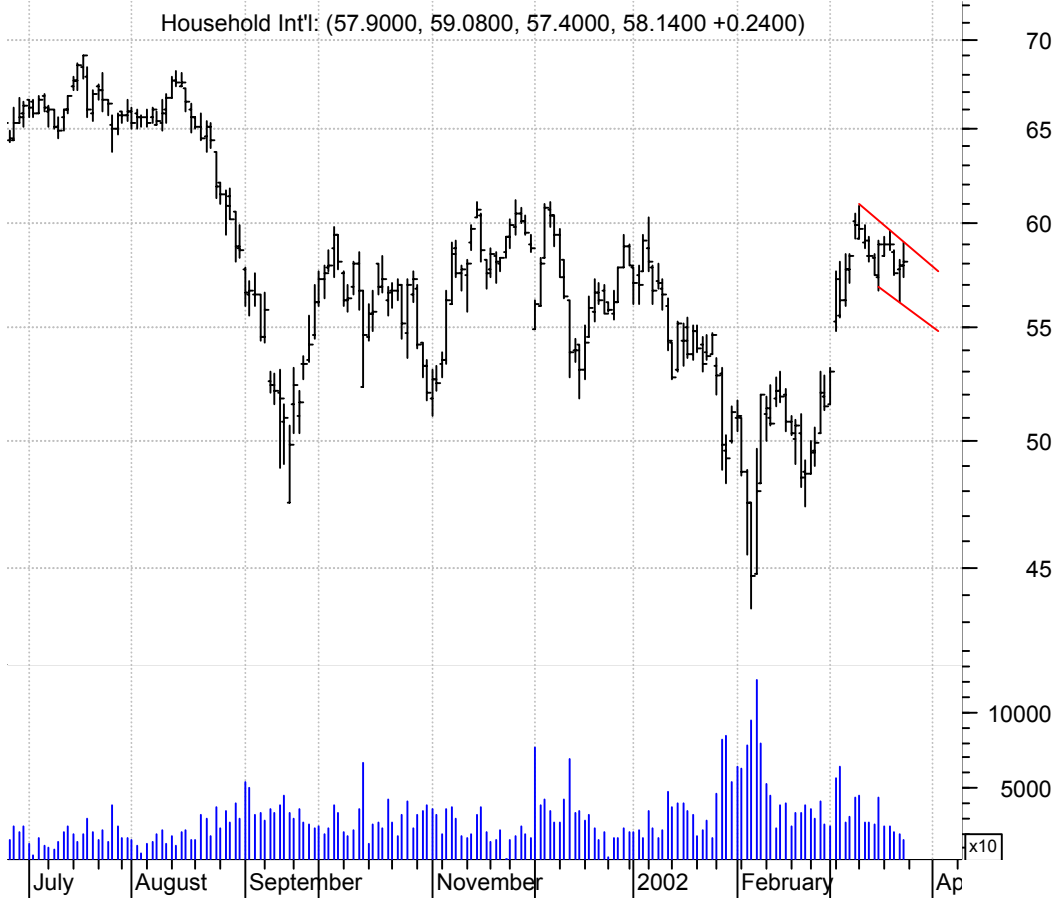
Harley Davidson (53.7600, 55.2700, 52.8000, 54.5100 +0.2300)



HELE



HI



HNT

Health Net Inc:N (26.4000, 26.6000, 25.9300, 26.0300 -0.1400)



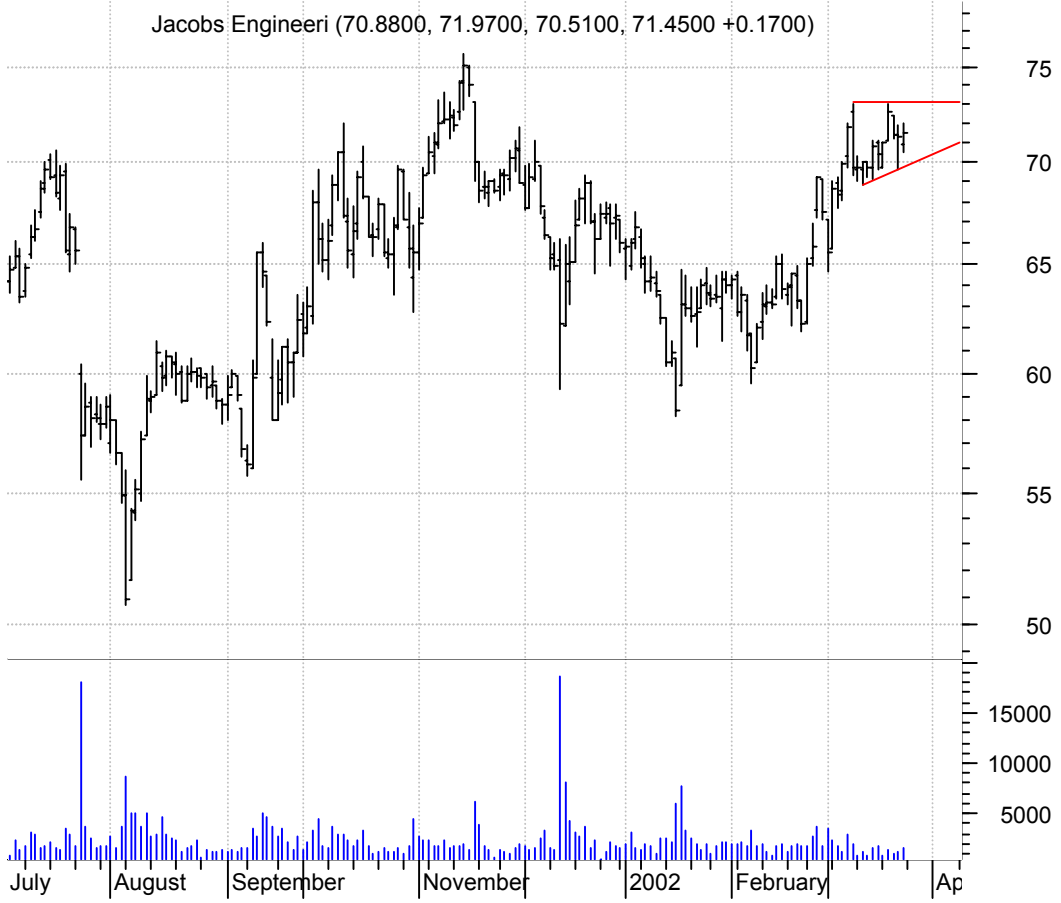
ITN

Intertan Int'l I (11.8500, 11.9000, 11.7900, 11.8500 +0.0100)



JEC

Jacobs Engineeri (70.8800, 71.9700, 70.5100, 71.4500 +0.1700)

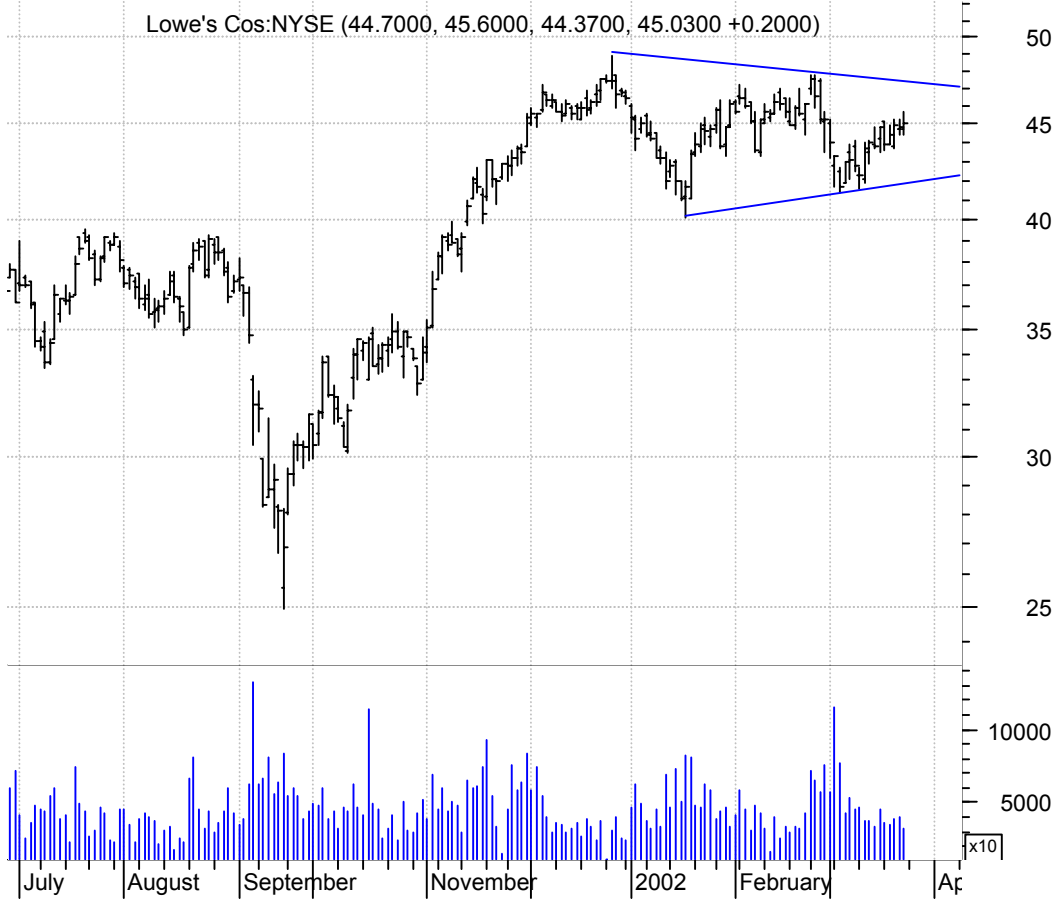


LNY

Landry Restauran (25.3500, 25.8000, 25.2500, 25.5000 +0.3000)



LOW



LTXX



MANH



MIEC



MRVL

Marvel Technolog (40.9600, 42.0000, 40.2000, 40.9300 -0.1900)



NDC

NDC Health Corp: (36.9000, 36.9800, 36.5800, 36.7000 -0.2000)



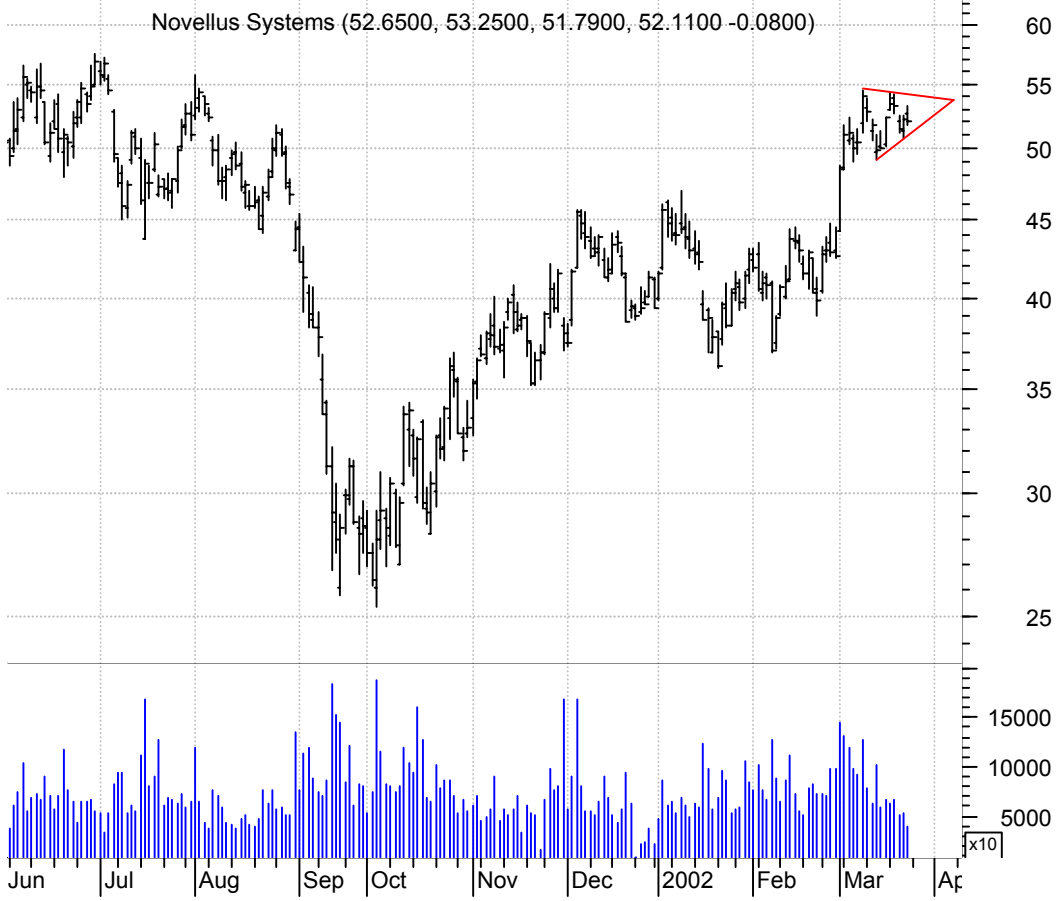
NFS



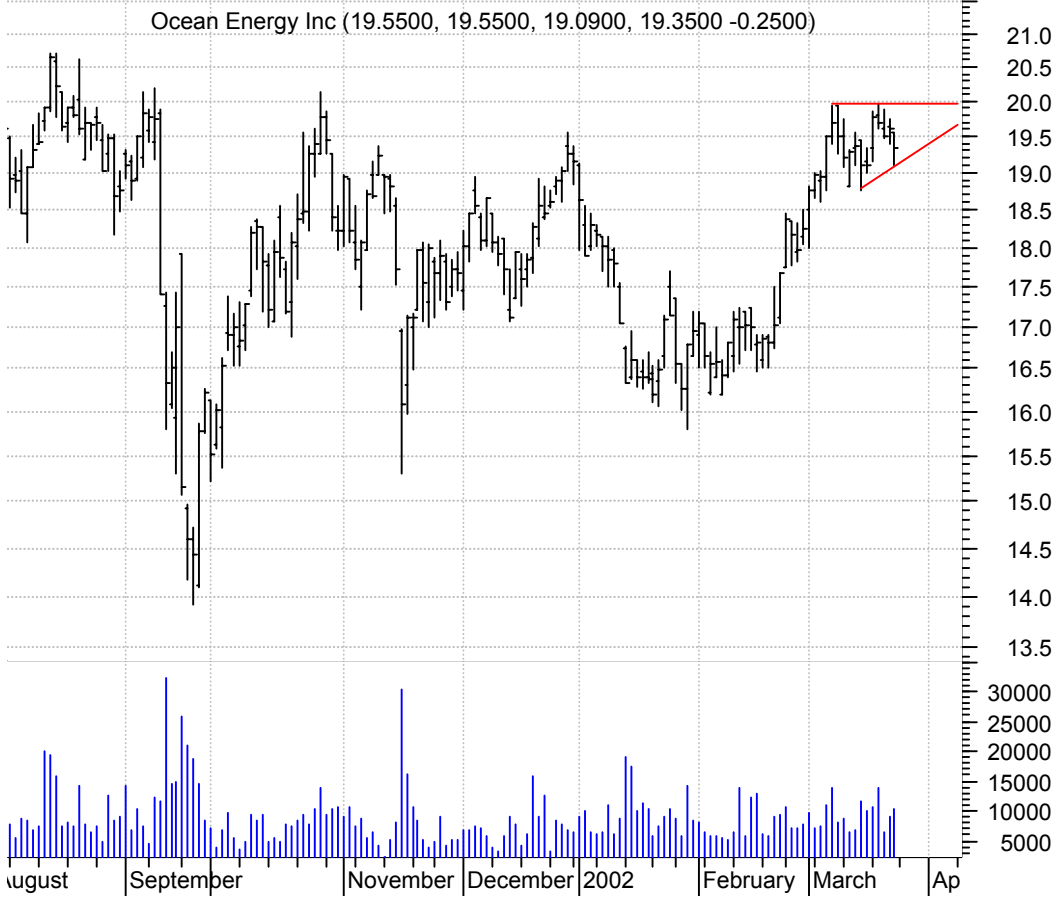
NTK



NVLS



OEI



OMC



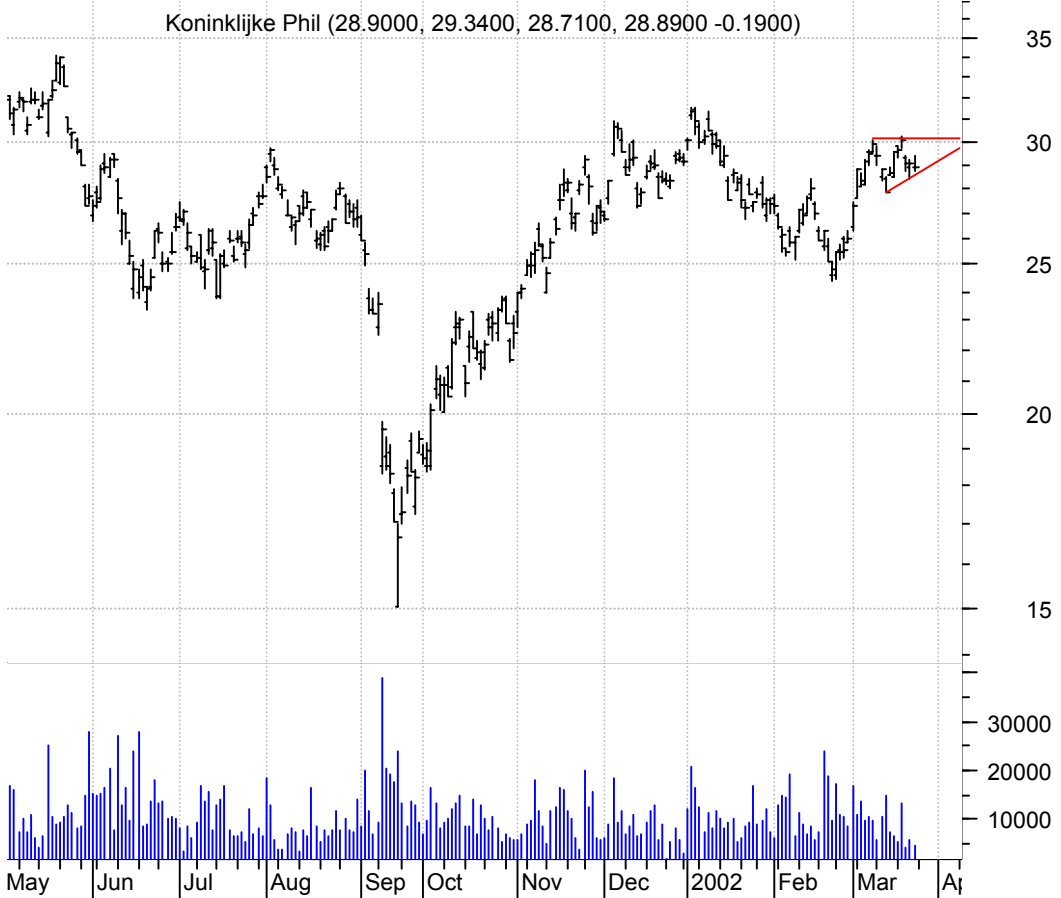
PDCO



PENN



PHG



PHTN

Photon Dynamics: (51.5000, 52.4700, 50.1300, 50.6000 -0.9600)



SBSA

Spanish Broadcas (13.9400, 13.9500, 13.1100, 13.1700 -0.8300)



SHFL



SLAB



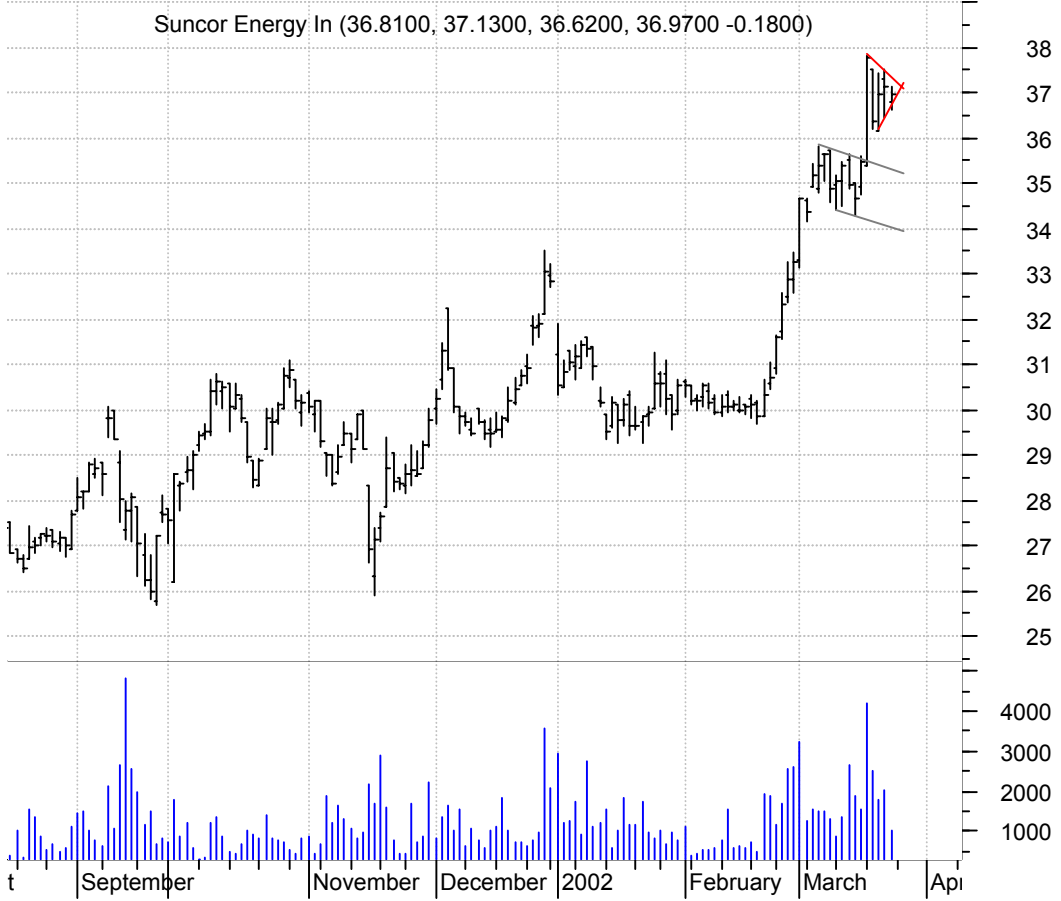
SLGN



SLVN



SU



SYMC



TIF

Tiffany & Co.:NY (36.2900, 36.4000, 35.7500, 35.8300 -0.4600)



TMA

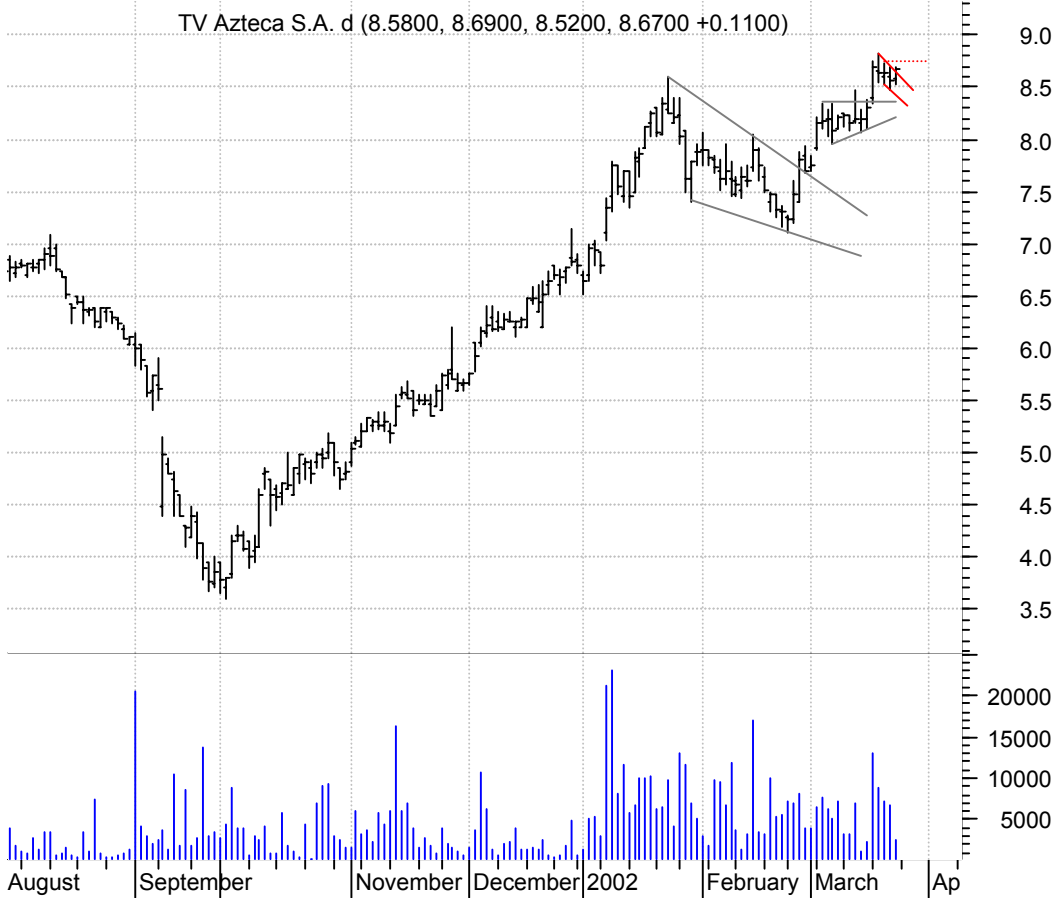
Thornburg Mortga (20.2000, 20.3900, 20.1200, 20.1300 -0.1400)



TOO



TZA



UFI

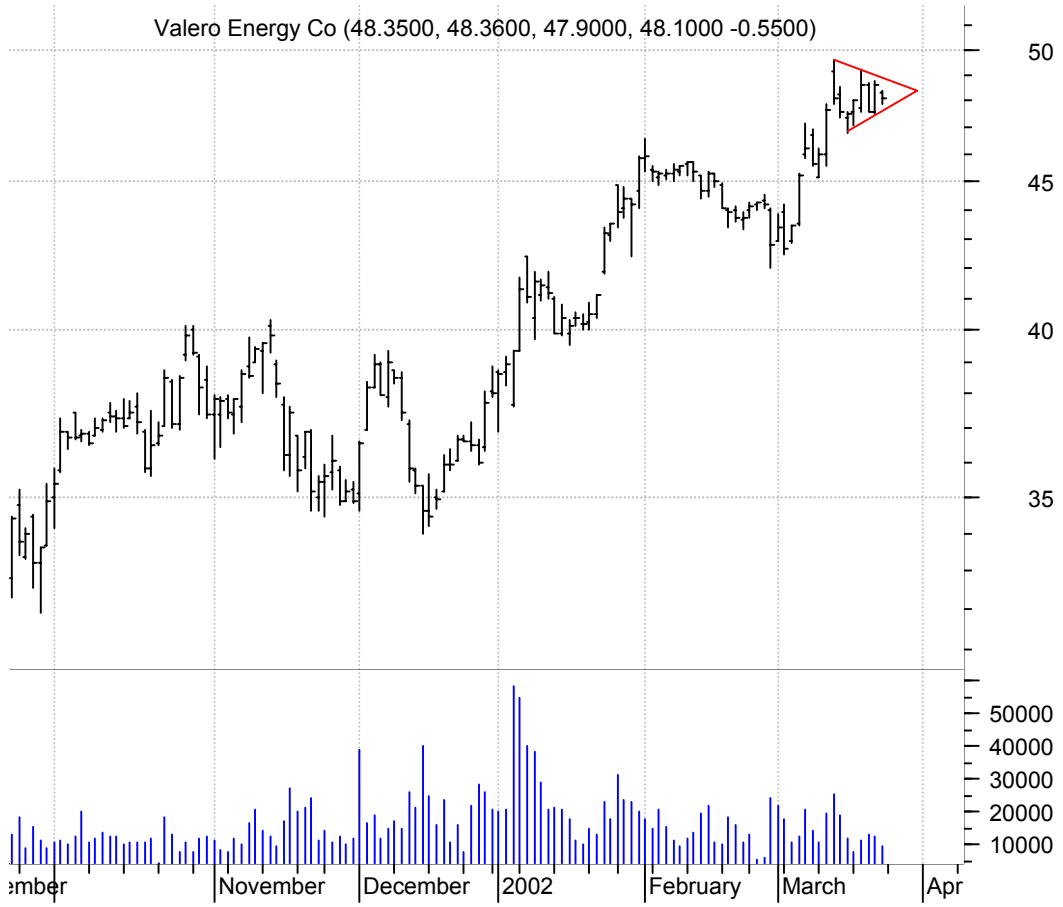


URS



VLO

Valero Energy Co (48.3500, 48.3600, 47.9000, 48.1000 -0.5500)



VMC

Vulcan Materials (46.9000, 47.5900, 46.6900, 47.4600 +0.5000)



VVUS

Vivus Inc:NASNM (9.1500, 9.2400, 8.9500, 9.1500 +0.2300)



WAG

Walgreen Co:NYSE (39.4500, 40.0000, 39.0000, 39.8100 +0.4100)



WCNX



WLP



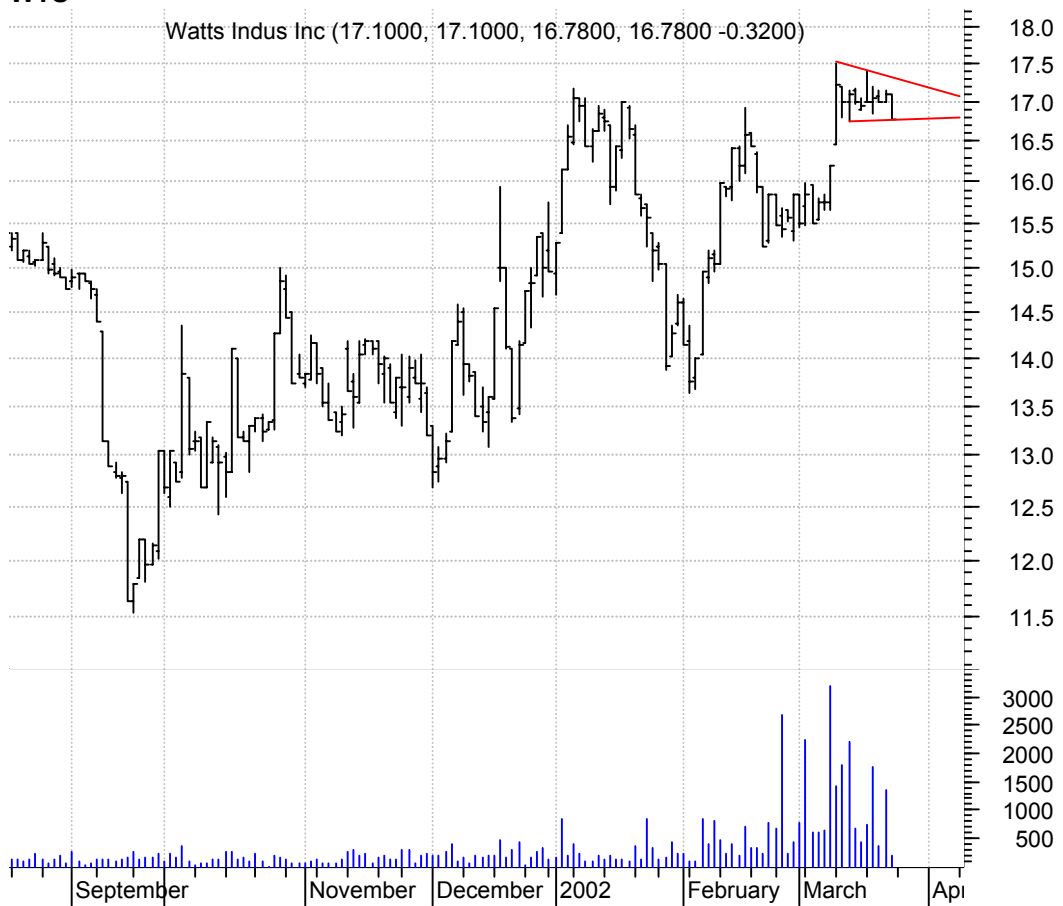
WMAR

West Marine Inc: (20.0600, 20.3200, 19.7100, 20.0000 -0.0500)



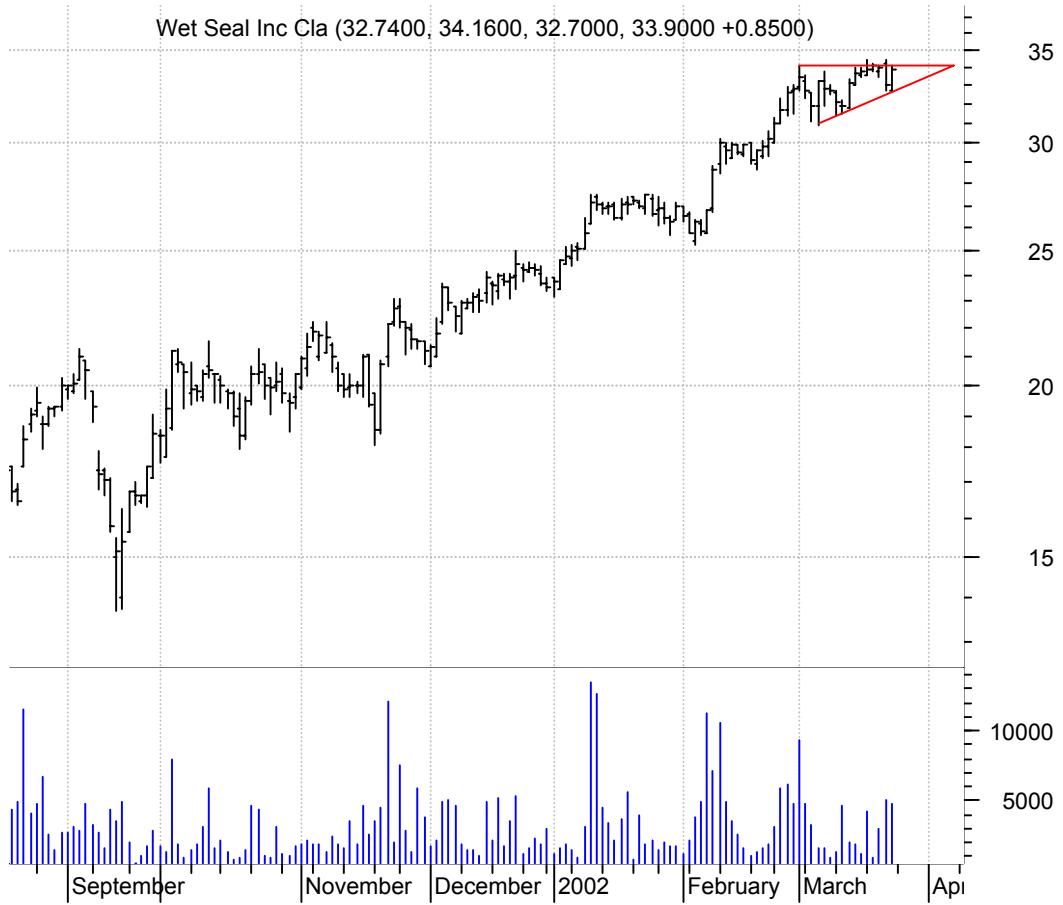
WTS

Watts Indus Inc (17.1000, 17.1000, 16.7800, 16.7800 -0.3200)



WTSLA

Wet Seal Inc Cla (32.7400, 34.1600, 32.7000, 33.9000 +0.8500)



WW

WATSON WYATT & C (26.5500, 26.7500, 26.4000, 26.6800 +0.1000)



XTO



chartpatterns.com
Chart Pattern Analysis for Timing the Markets

KMatras@aol.com