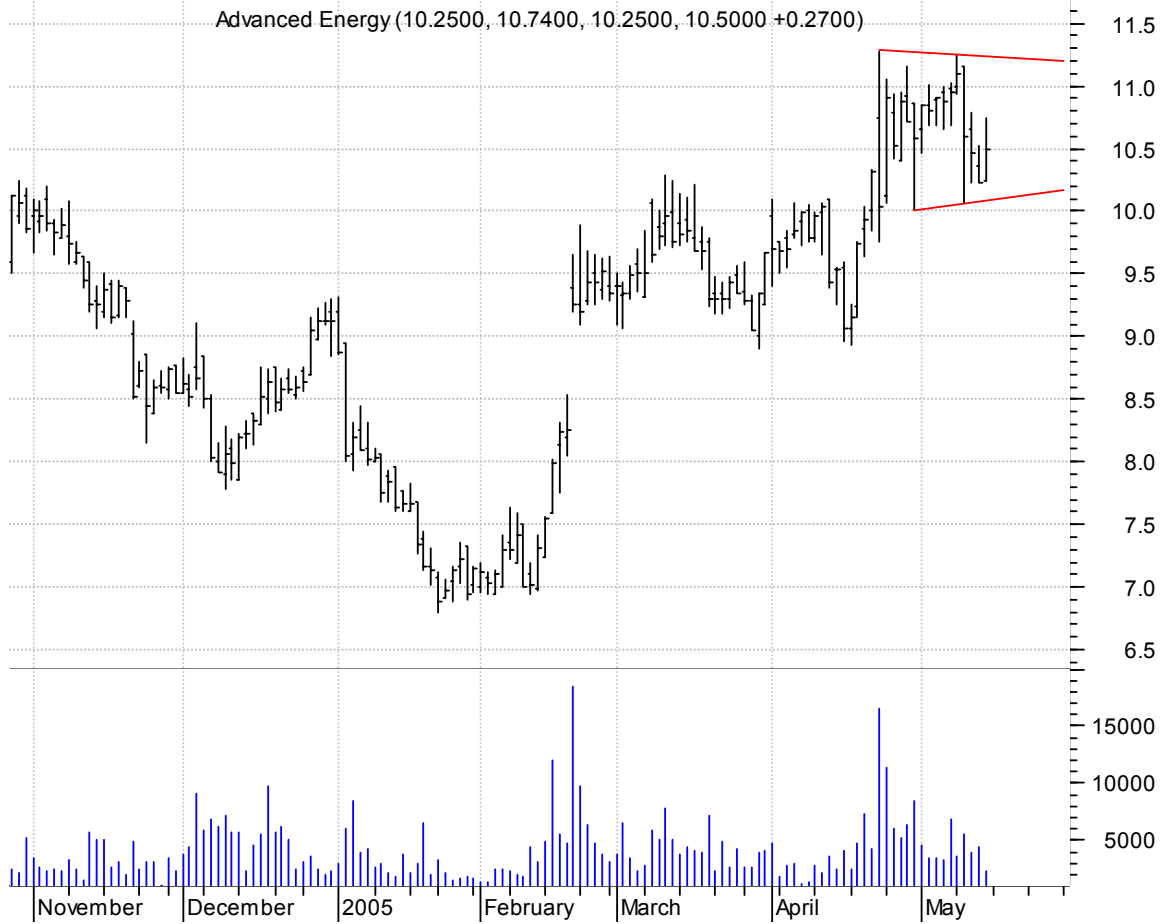


AEISE symm. tri. / buy on upside brkout on increased volume

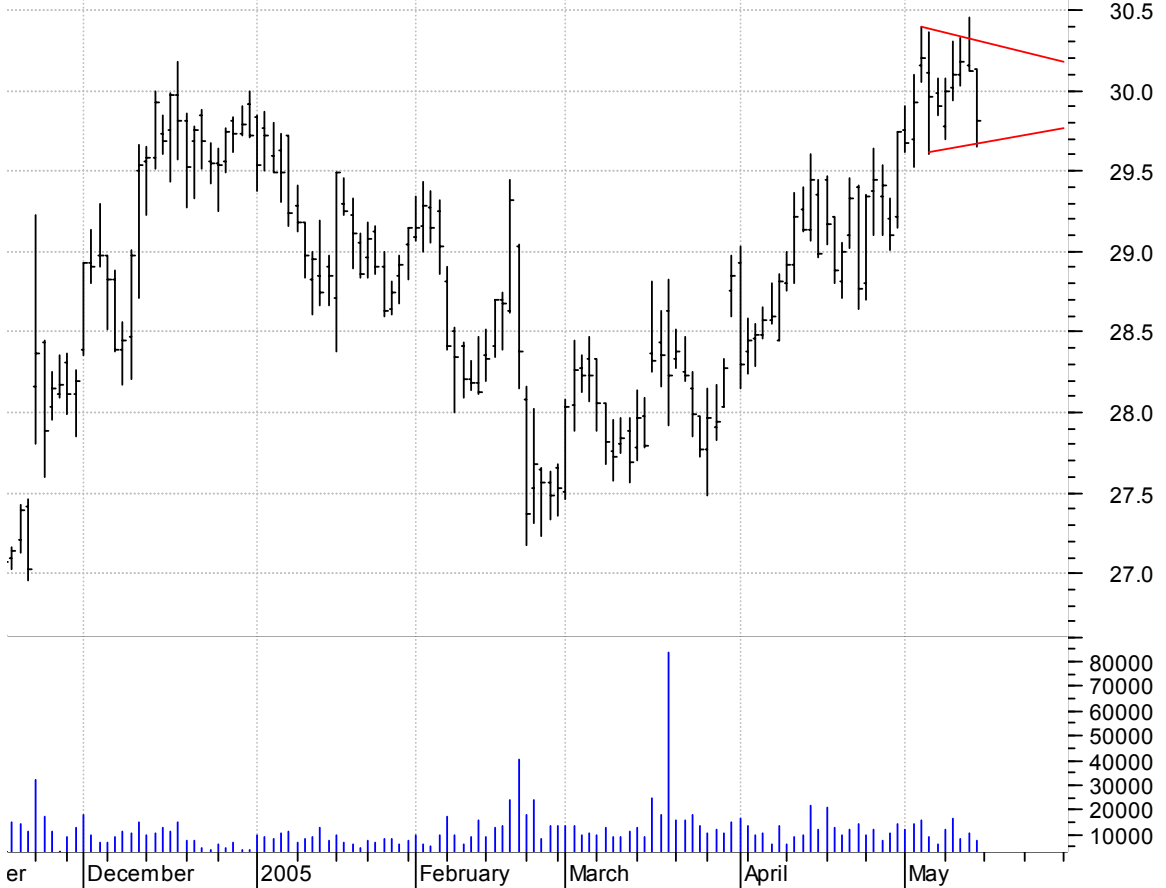


CERN asc. tri. / buy on upside brkout on increased volume



CPB sloppy symm. tri. / buy on upside brkout on increased volume

Campbells Soup C (30.1300, 30.1300, 29.6500, 29.8100 -0.3100)



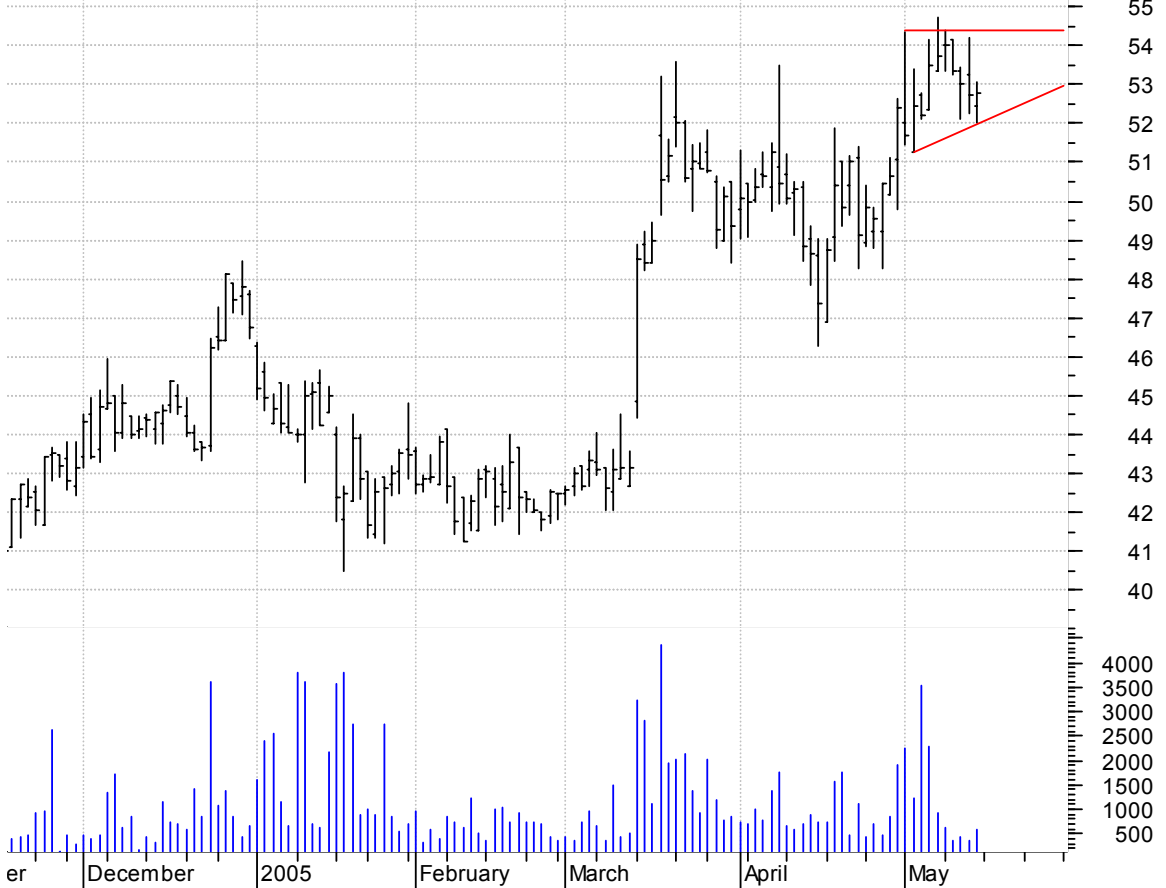
CPSI asc. tri. preceded by 'pole-like' move / buy on upside brkout on increased volume

COMPUTER PROGRAM (33.2000, 33.8800, 32.5200, 32.8800 -0.3200)



CRAI sloppy asc. tri. / buy on upside breakout on increased volume

Charles River As (52.4300, 53.0800, 52.0100, 52.7700 +0.0200)



DNA symm. tri. preceded by 'pole-like' move / buy on upside breakout on increased volume

Genentech Inc.NY (72.8500, 73.0000, 71.4000, 72.7000 -0.2900)



EEFT symm. tri. / buy on upside brkout on increased volume

Euronet Worldwid (29.1800, 29.3500, 28.7800, 29.0500 -0.0800)



EMKR symm. tri. / buy on upside brkout on increased volume

Emcore Corp:OTC (3.3600, 3.4000, 3.0600, 3.1300 -0.1600)



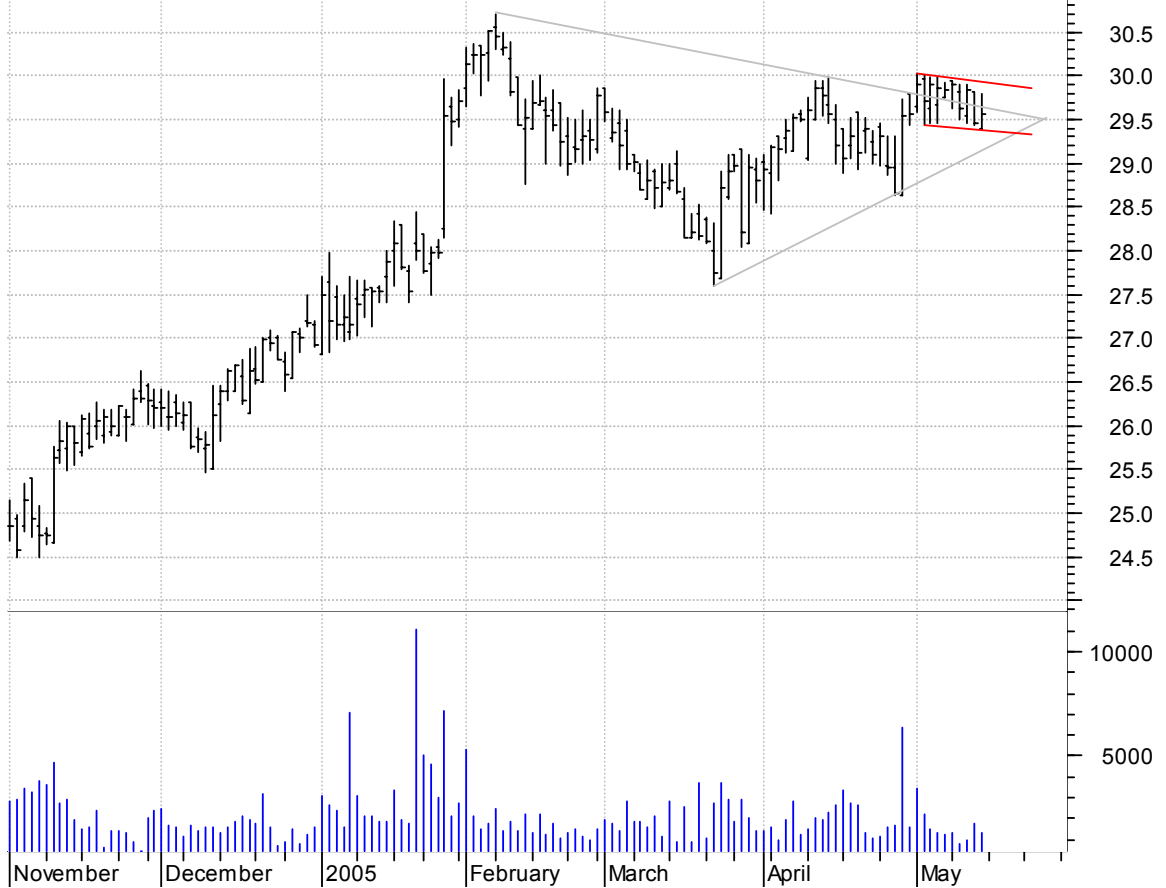
HXL sloppy asc. tri. preceded by 'pole-like' move / buy on upside brkout on increased volume

Hexcel Corp/De:N (16.5500, 16.6100, 16.5000, 16.5500 -0.0600)



INGR base on base (bullish flagging on symm. tri.) / buy on upside brkout on increased volume

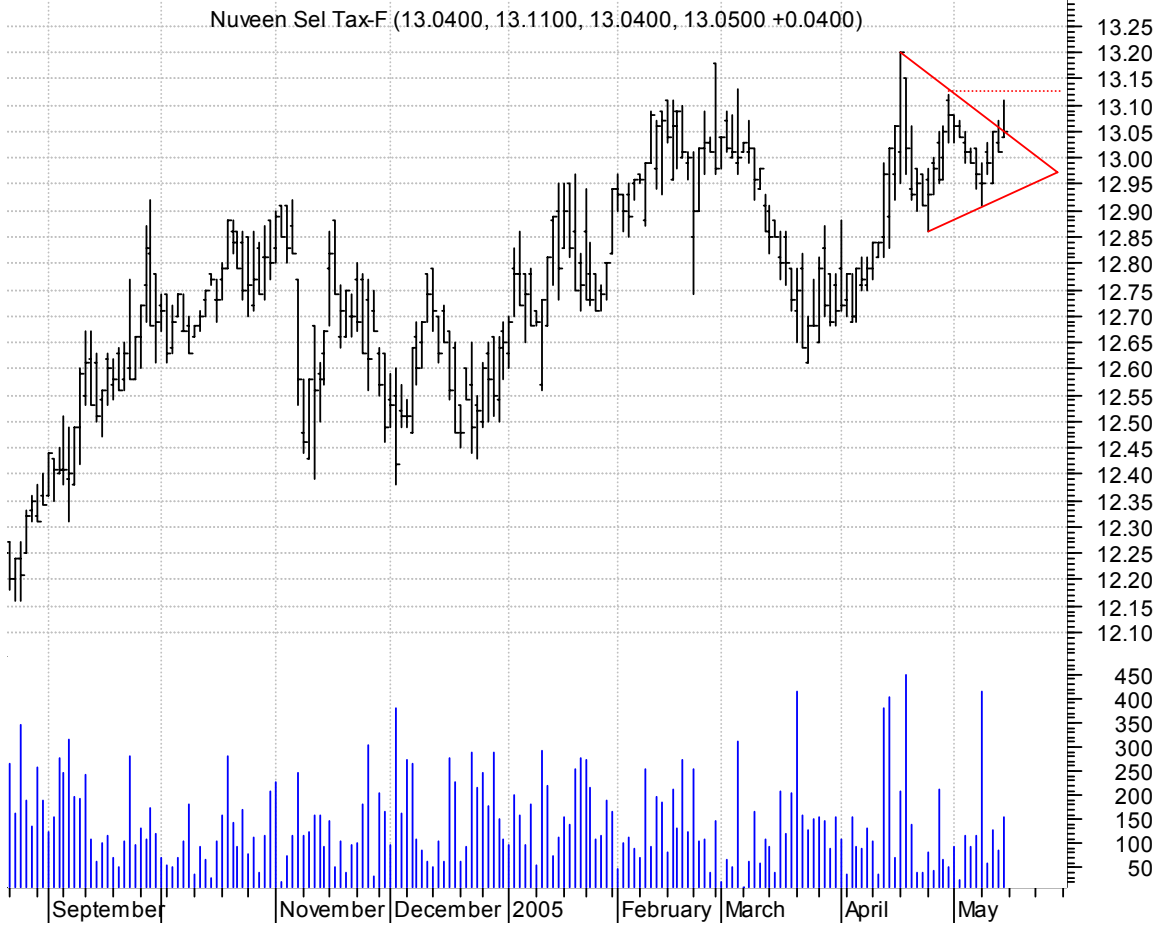
Intergraph Corp: (29.4000, 29.8000, 29.4000, 29.5600 +0.1000)



MW symm. tri. / buy on upside breakout on increased volume



NXR symm. tri. / buy on upside breakout thru dotted red line on increased volume



SHLD symm. tri. / buy on upside brkout on increased volume



USNA symm. tri. / sell on downside brkout on increased volume



YHOO bullish flagging / buy on upside breakout on increased volume



chartpatterns.com

Chart Pattern Analysis for Timing the Markets

KMatras@aol.com