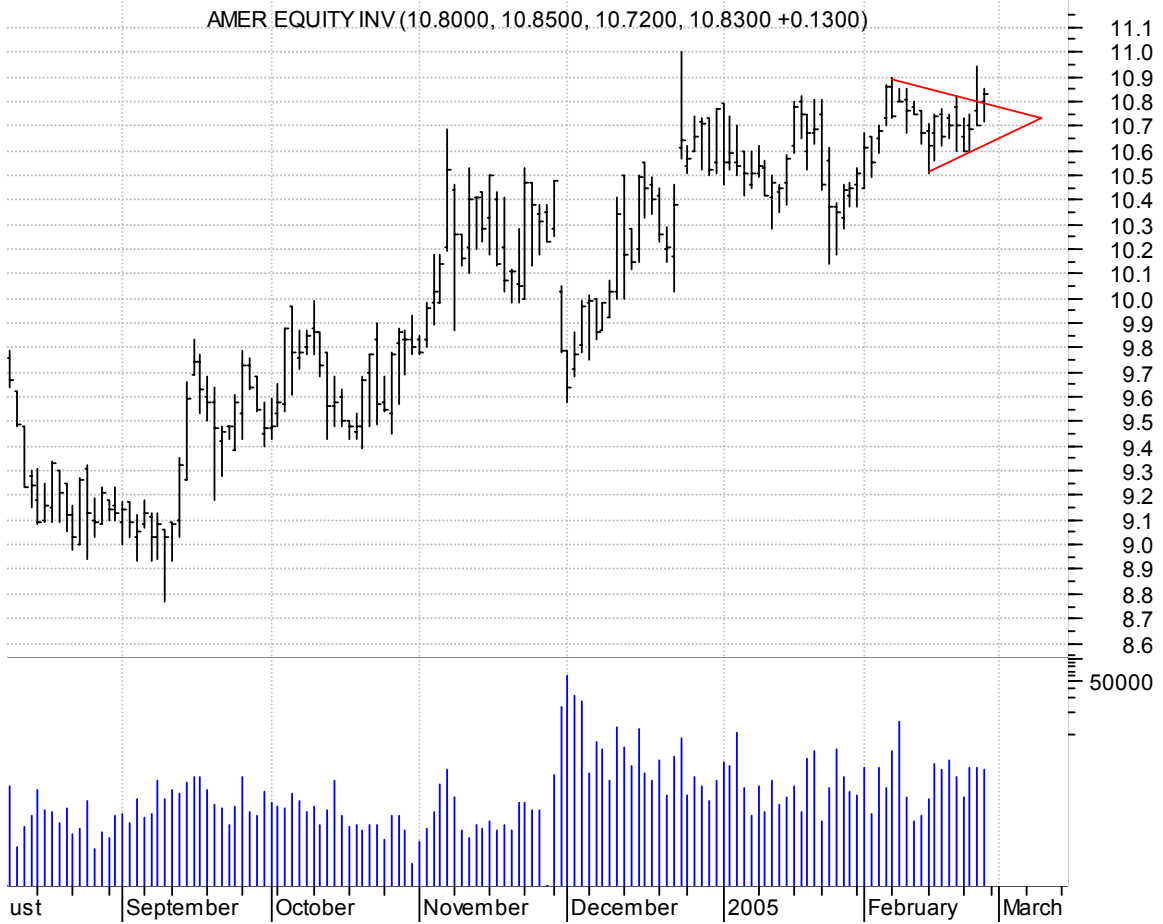


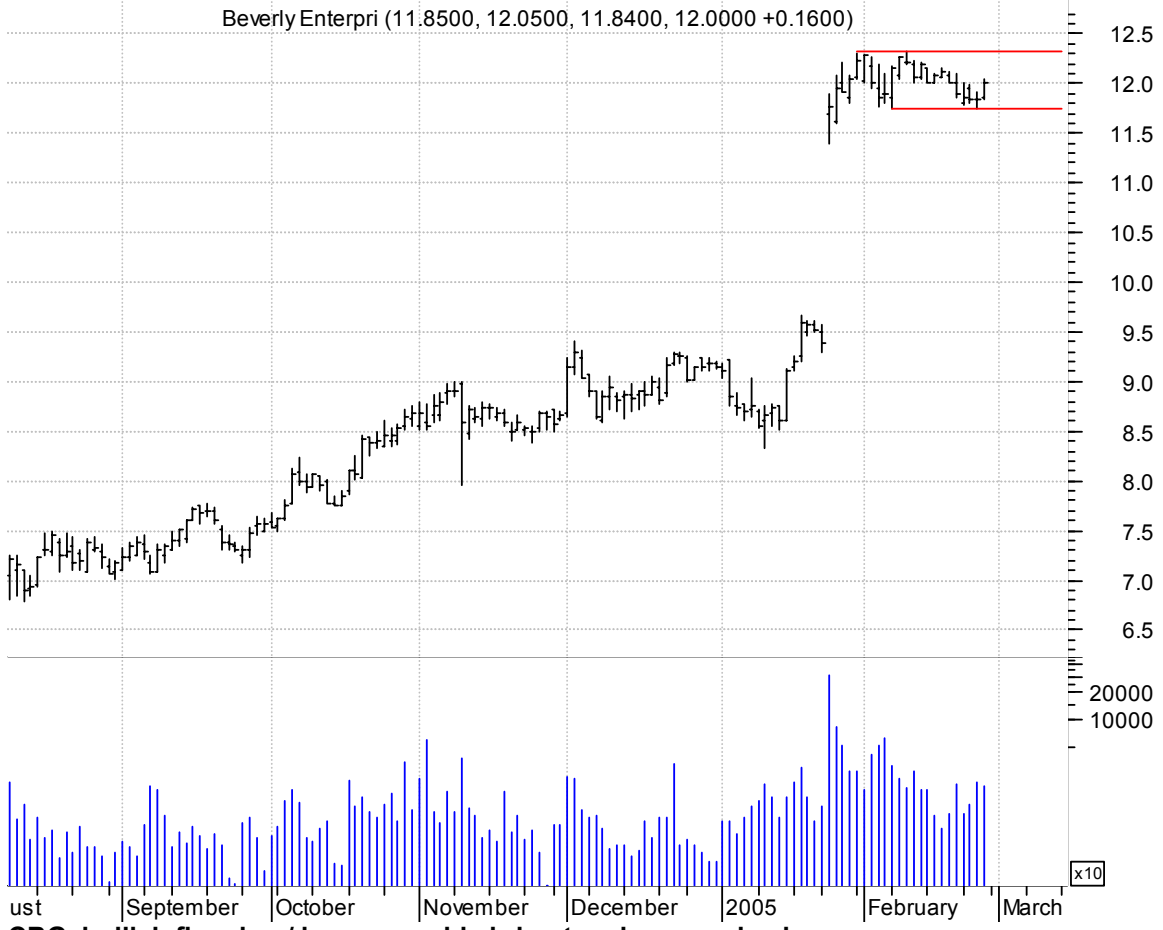
**AEL symm. tri. breakout / buy and use bottom of pattern (asc. trendline) as a failure point**



**AMMD asc. tri. / buy on upside breakout on increased volume**



**BEV rectangle preceded by 'pole-like' move / buy on upside breakout on larger than normal volume**



**CBG bullish flagging / buy on upside breakout on increased volume**



**CMRG symm. tri. brkout / buy and use bottom of pattern (asc. trendline) as a failure point**

Casual Male Rtl: (5.4900, 5.6600, 5.4900, 5.5900 +0.0000)



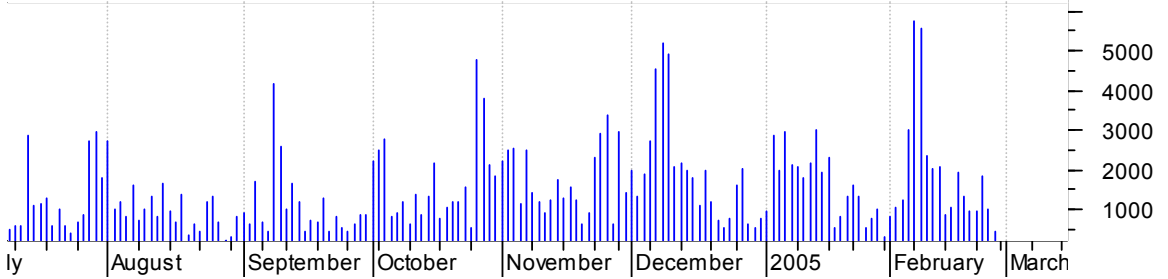
**COH symm. tri. / buy on upside brkout thru dotted red line on increased volume**

COACH INC:NYSE (55.5300; 56.7800; 55.5000; 56.6500 +0.9400)



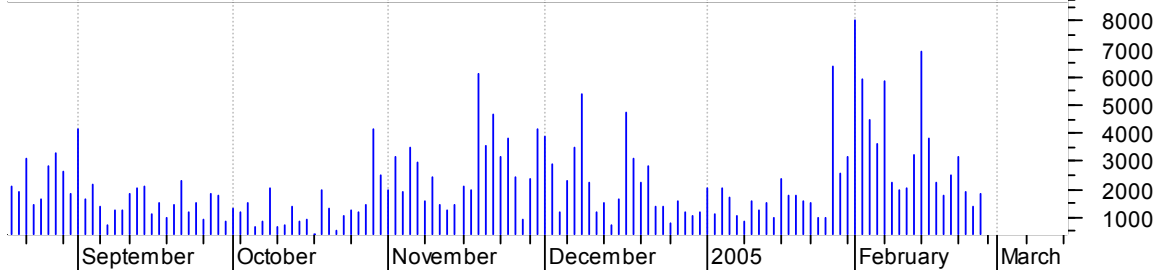
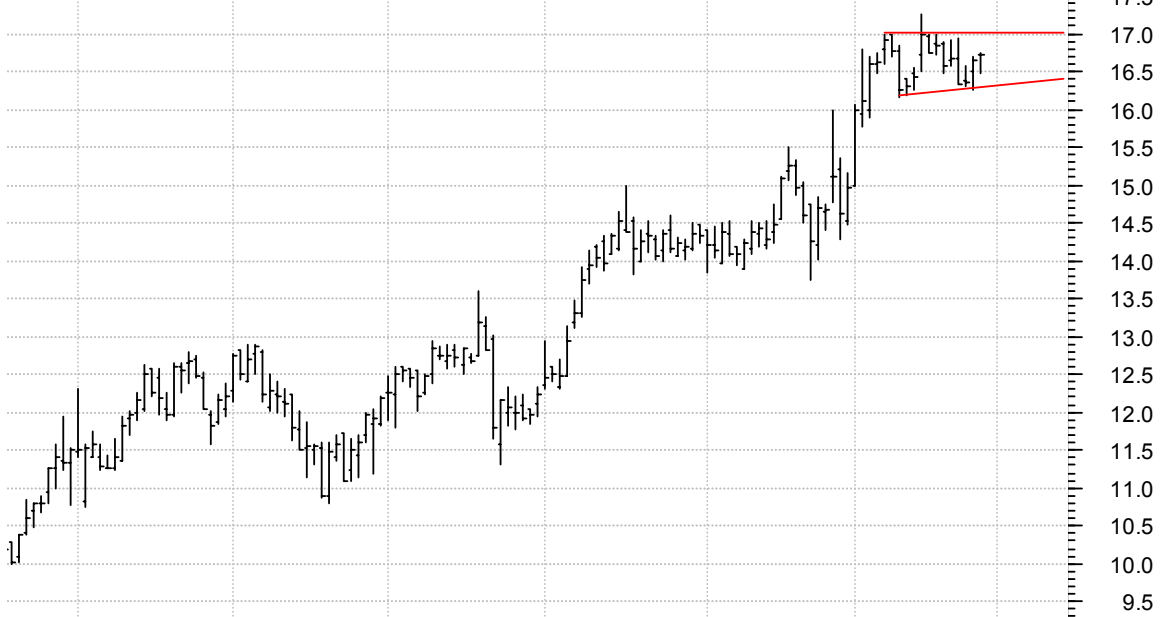
**DIOD bullish flag / buy on upside brkout on increased volume**

Diodes Inc:OTC (25.5000, 25.8700, 25.2900, 25.7900 +0.0800)



**DTPI sloppy asc. tri. / buy on upside brkout on increased volume**

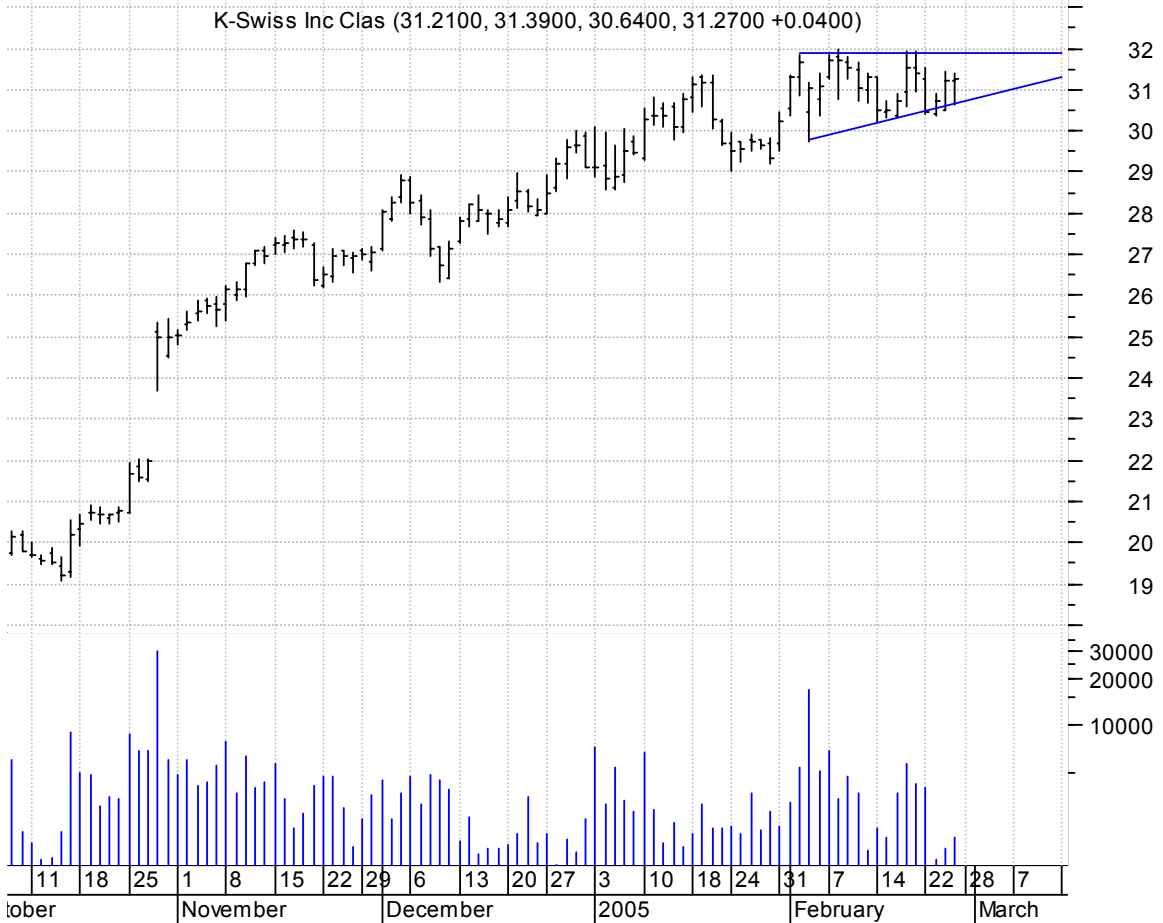
Diamond Cluster (16.7200, 16.7500, 16.4800, 16.7200 +0.0800)



**GHCI symm. tri. preceded by 'pole-like' move / buy on upside brkout on larger than normal volume**



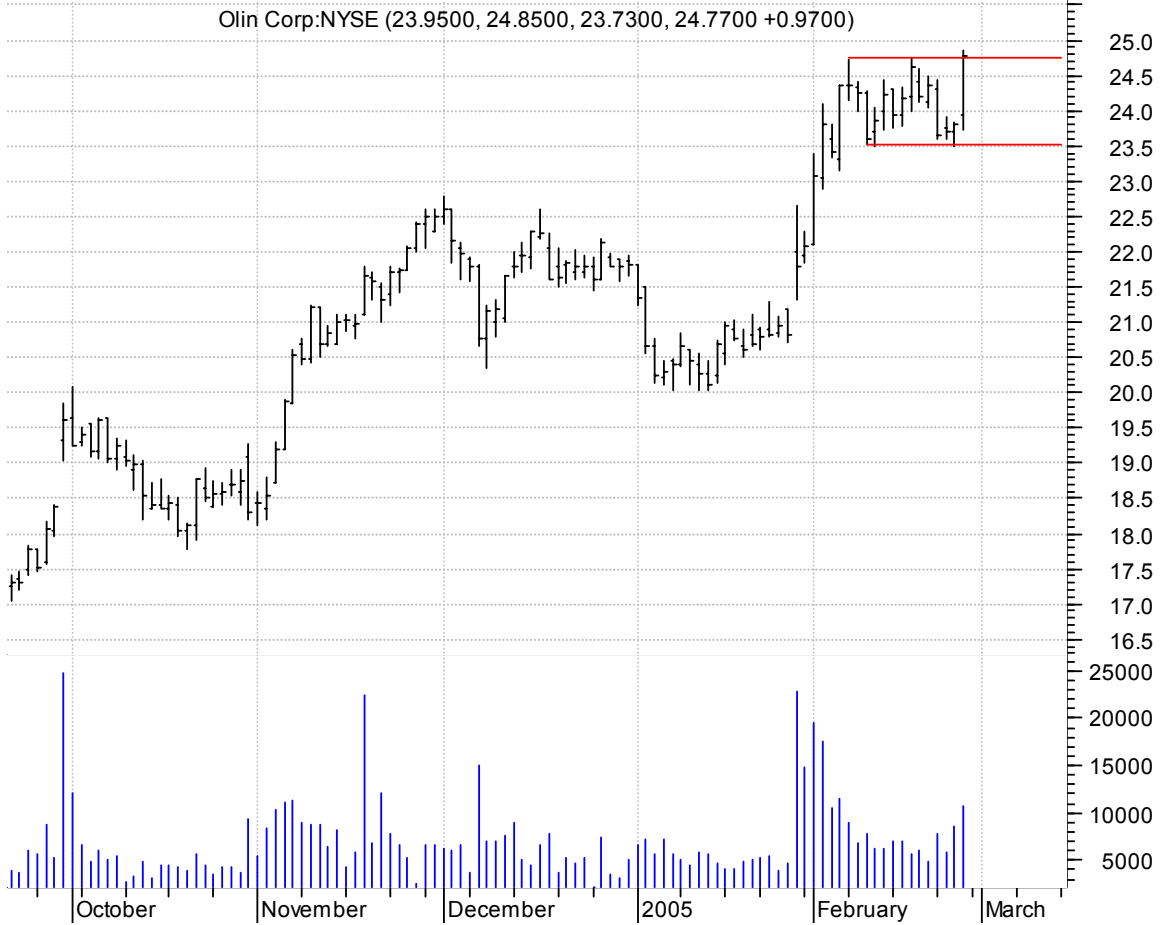
**KSWS asc. tri. / buy on upside brkout on increased volume**



**MRVL bullish flagging & breakout / buy on upside breakout thru dotted red line on lrg than normal volume**



**OLN rectangle preceded by 'pole-like' move / buy on upside breakout on larger than normal volume**



**RMD bullish flag / buy on upside brkout on increased volume**

Resmed Inc:NYSE (58.6000, 59.3000, 58.6000, 59.1800 +0.1600)

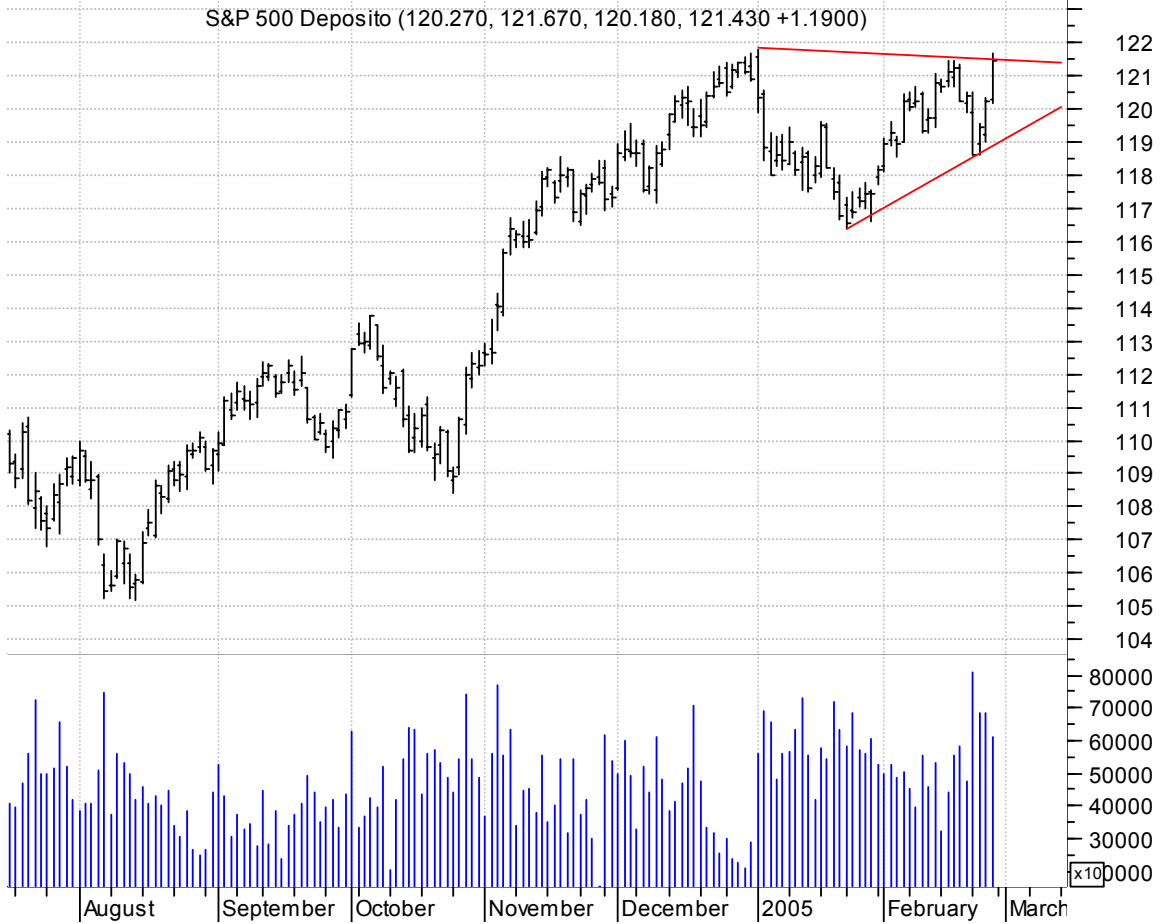


**SGTL asc. tri. / buy on upside brkout on increased volume**

SigmaTel INC:OTC (42.0000, 43.1900, 41.1900, 42.9800 +1.1300)



**SPY symm. tri. / buy on upside breakout on increased volume**

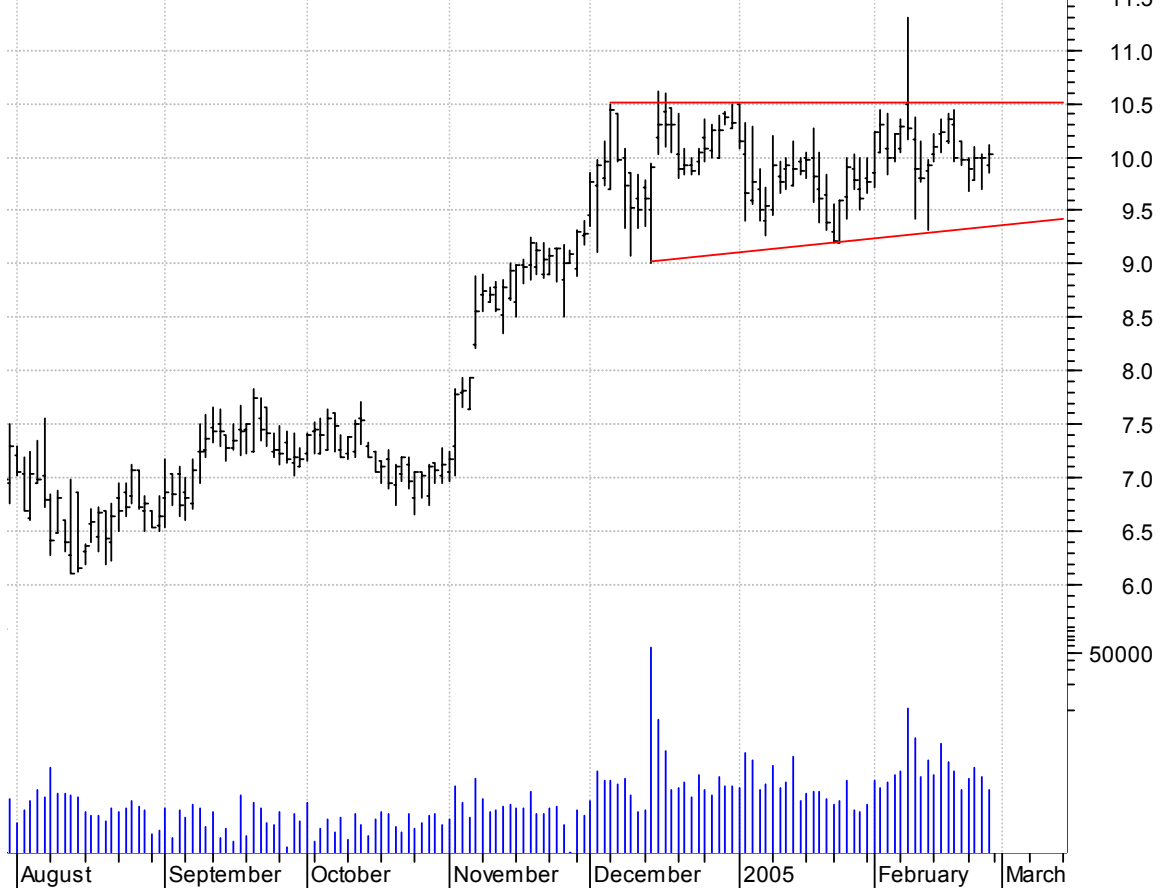


**STX asc. tri. / buy on upside breakout on increased volume**



**SYXI sloppy asc. tri. (discounting spike day) / buy on upside brkout on increased volume**

IXYS Corp.OTC (9.9300, 10.1200, 9.8600, 10.0200 +0.0200)



**TCBI sloppy asc. tri. (discounting spike day) / buy on upside brkout on increased volume**

TEXAS CAPITAL BA (23.9500, 24.0000, 23.7300, 23.9000 -0.0200)



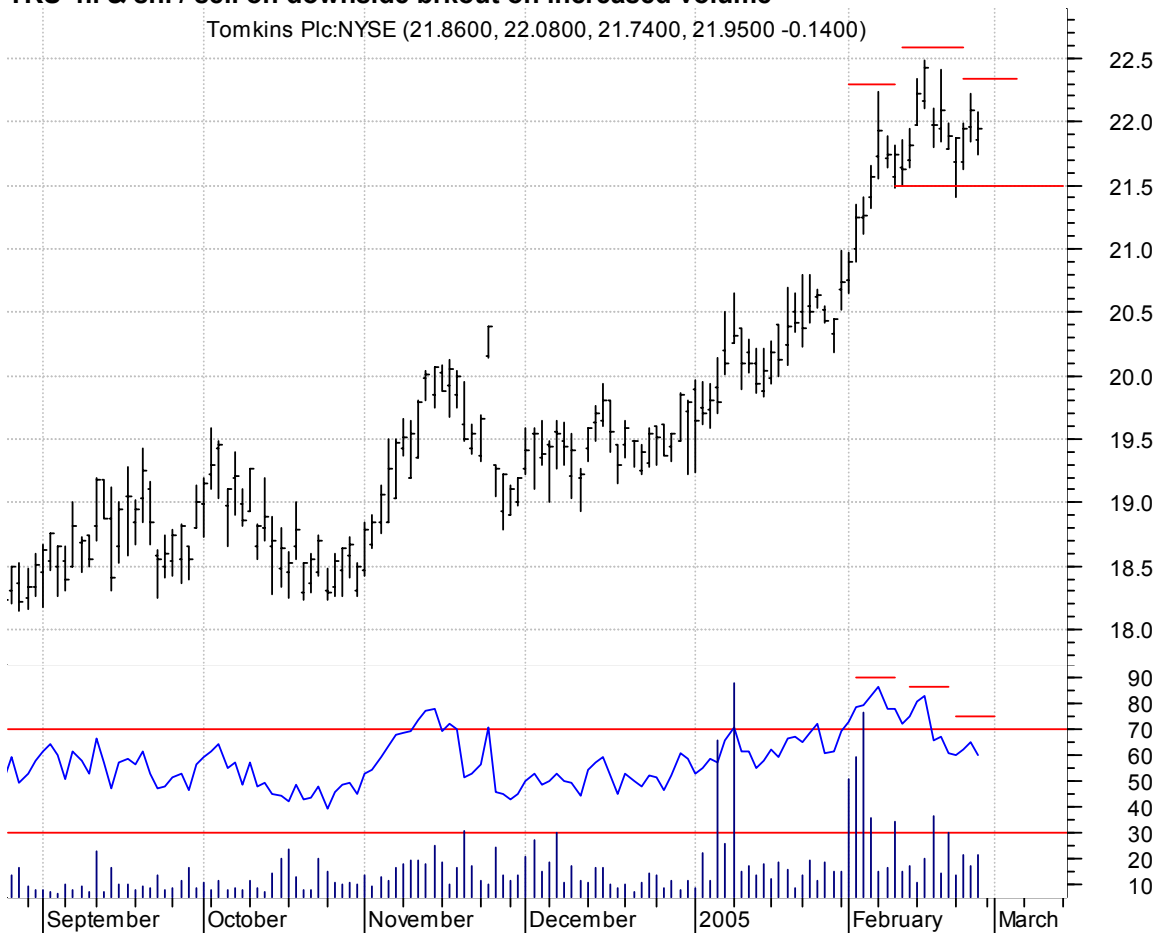
**THO symm. tri. / buy on upside brkout on increased volume**

Thor Industries (34.9000, 35.5000, 34.5600, 35.5000 +0.5900)



**TKS h. & sh. / sell on downside brkout on increased volume**

Tomkins Plc:NYSE (21.8600, 22.0800, 21.7400, 21.9500 -0.1400)



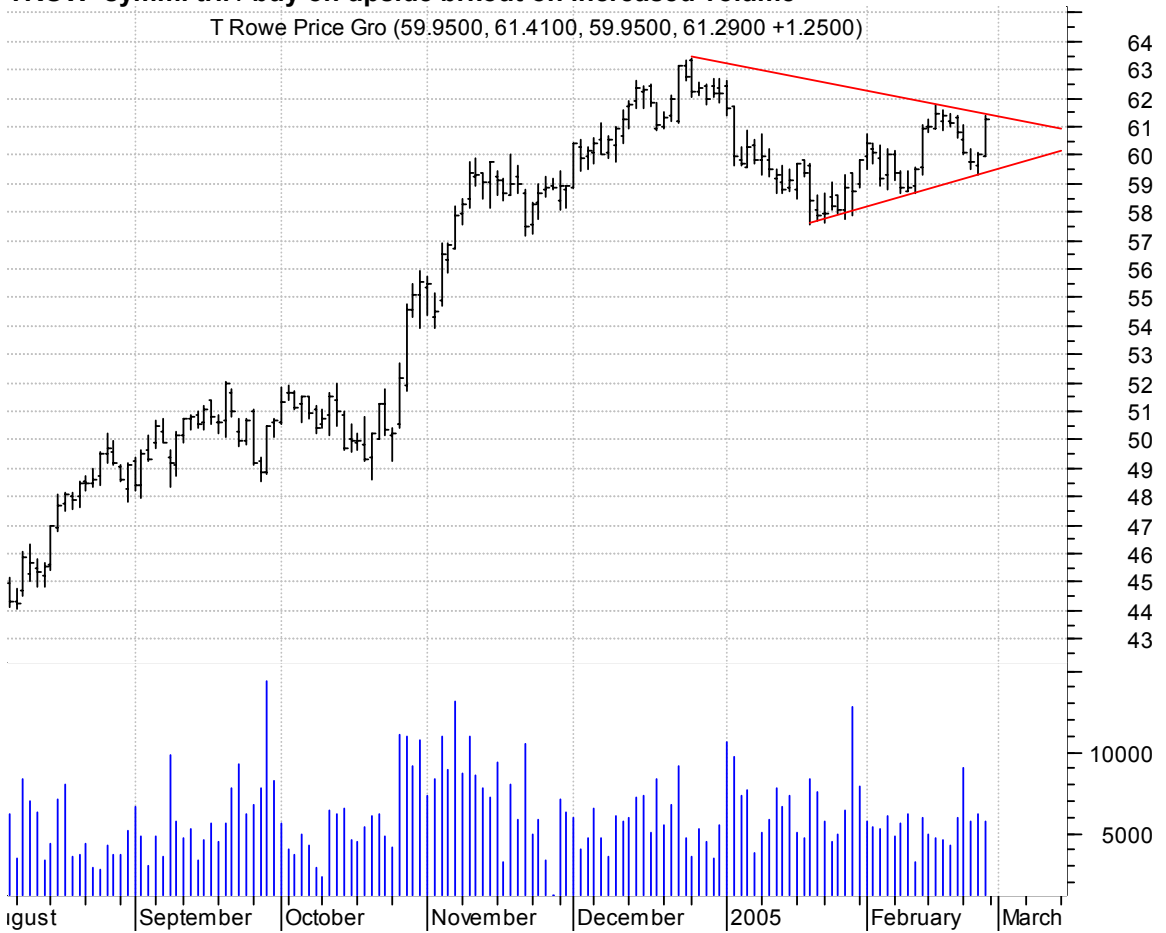
**TOA symm. tri. / buy on upside brkout thru dotted red line on increased volume**

Technical Olympi (28.9000, 29.8500, 28.9000, 29.2800 +0.4600)



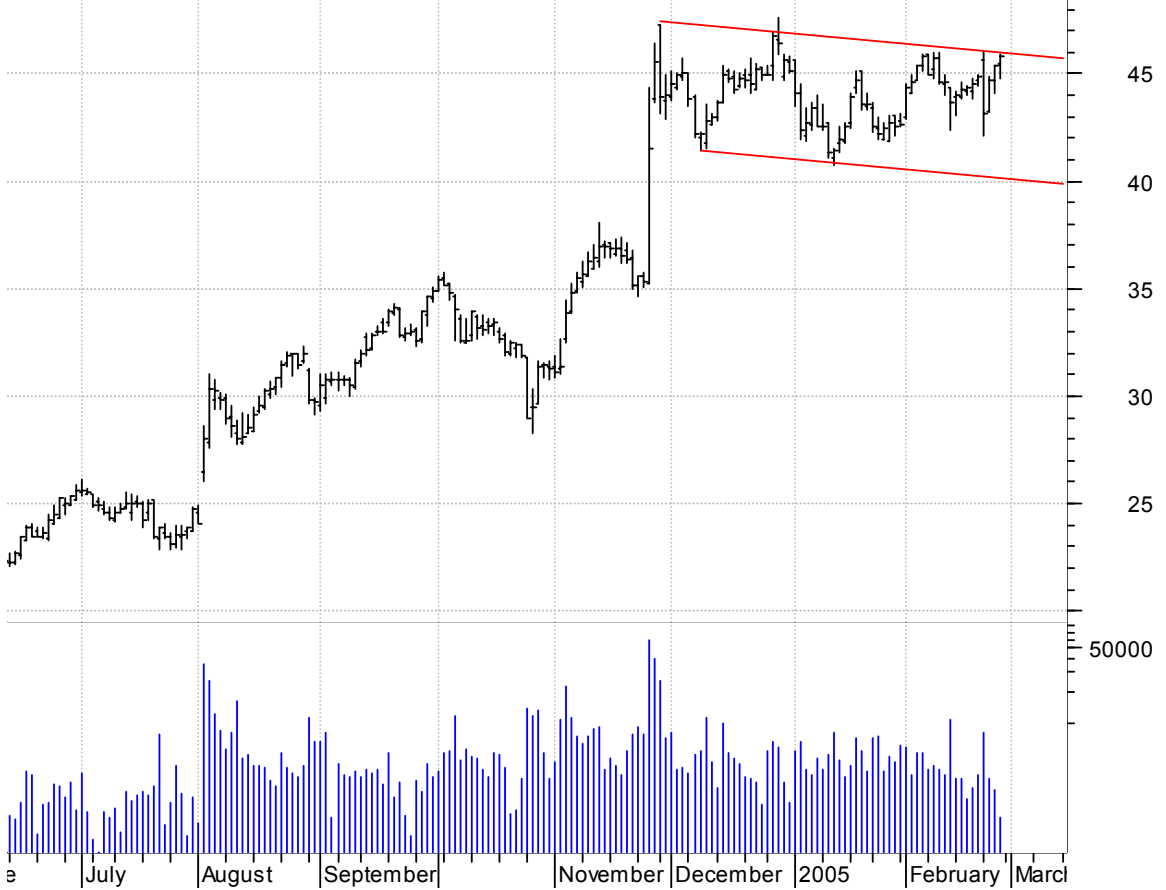
**TROW symm. tri. / buy on upside brkout on increased volume**

T Rowe Price Gro (59.9500, 61.4100, 59.9500, 61.2900 +1.2500)



**UTHR bullish flagging / buy on upside breakout on increased volume**

United Therapeut (45.4500, 45.8900, 44.8000, 45.7800 +0.3700)

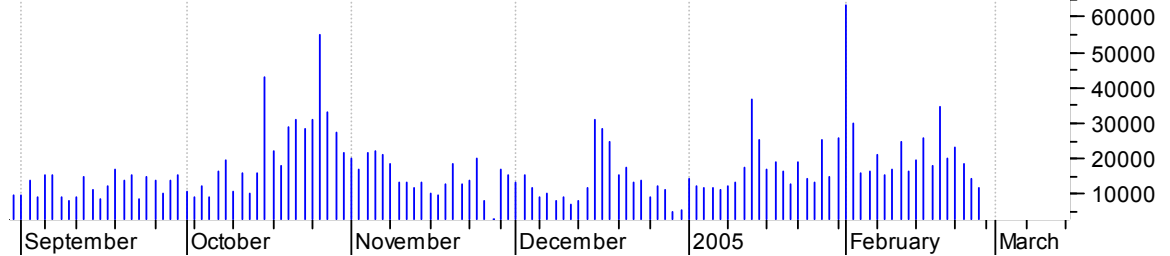


**WIND asc. tri. preceded by 'pole-like' move / buy on upside breakout on increased volume**

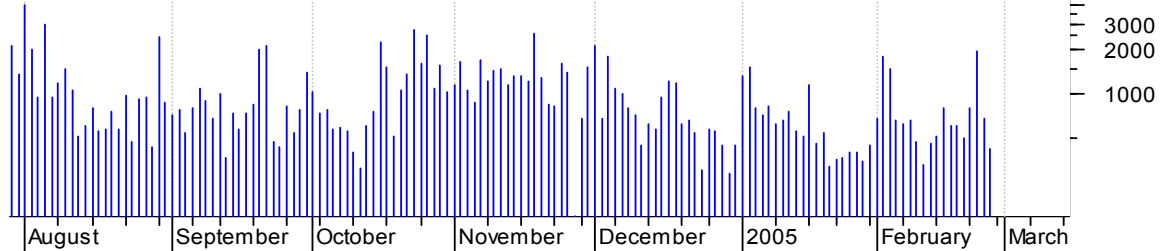
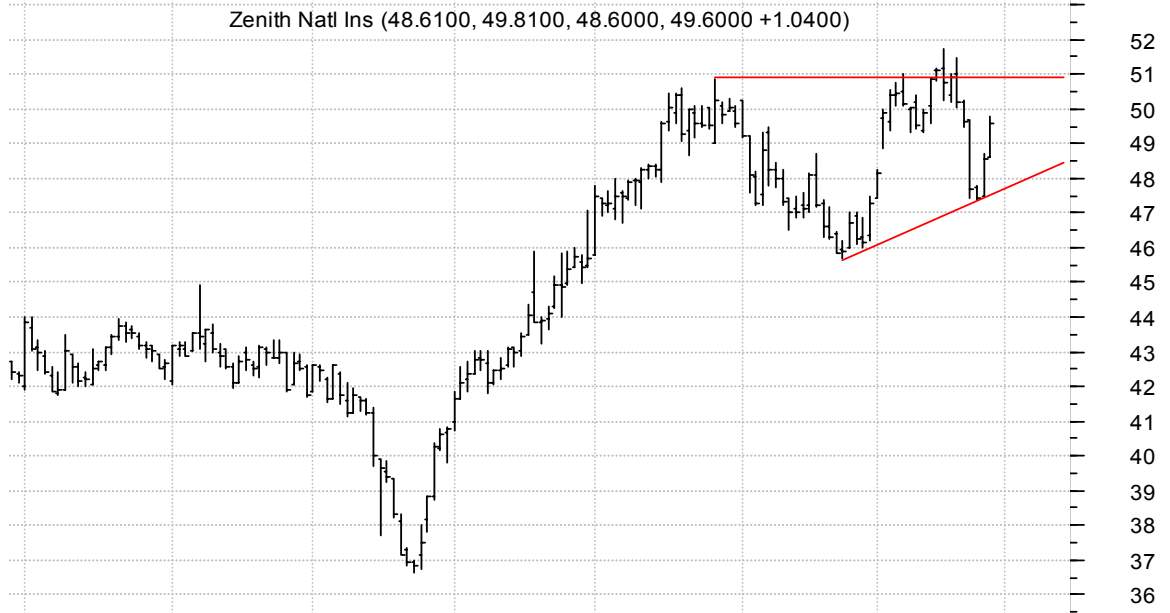
Wind River Syste (13.4500, 13.6800, 13.3500, 13.5300 -0.0500)



**ZMH symm. tri. preceded by 'pole-like' move / buy on upside brkout thru dotted red line on increased volume**



**ZNT sloppy asc. tri. / buy on upside brkout on increased volume**



### ZQK sloppy asc. tri. / buy on upside breakout on increased volume

Quicksilver Inc: (31.3000, 31.8200, 30.9200, 31.8200 +0.5700)



**chartpatterns.com**  
Chart Pattern Analysis for Timing the Markets

[KMatras@aol.com](mailto:KMatras@aol.com)